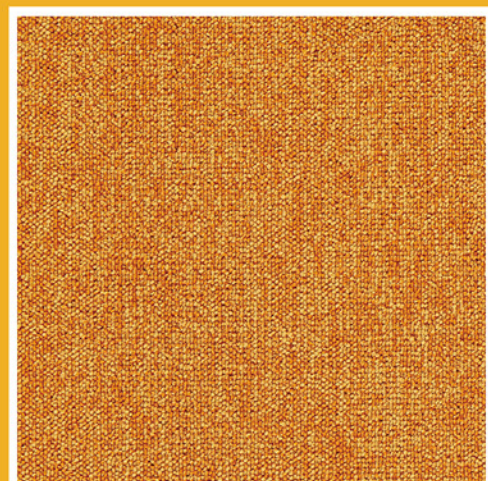


RENOFLOR®



晨夕



晨夕81

RENOFLOR®



晨夕21



晨夕22+23+41



晨夕22+41+81+82



晨夕11



晨夕23



晨夕21+51



晨夕22+24

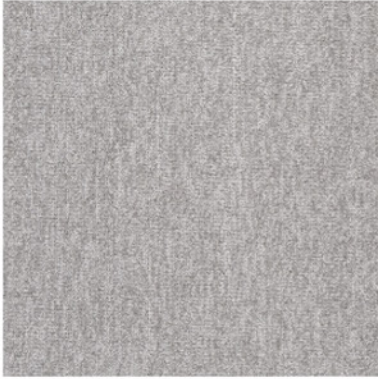


晨夕22



晨夕11+21+31+32

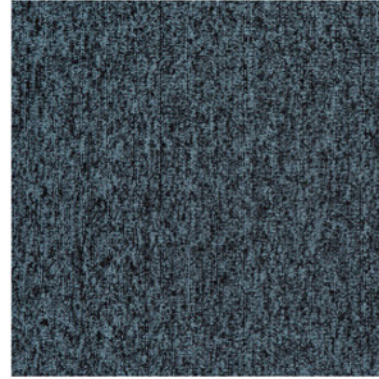




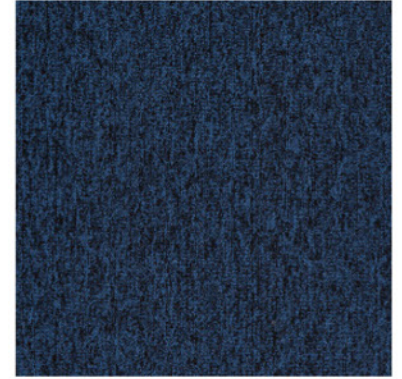
晨夕11



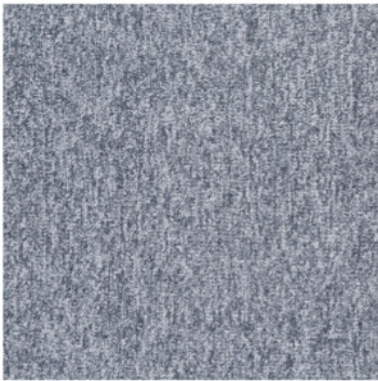
晨夕41



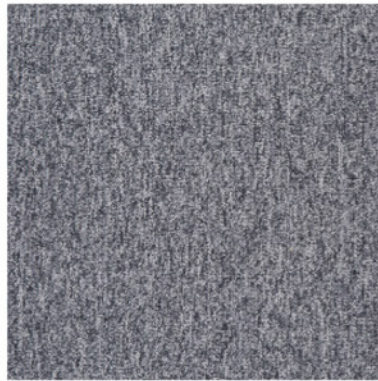
晨夕31



晨夕32



晨夕21



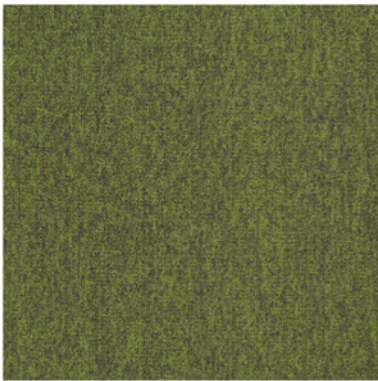
晨夕22



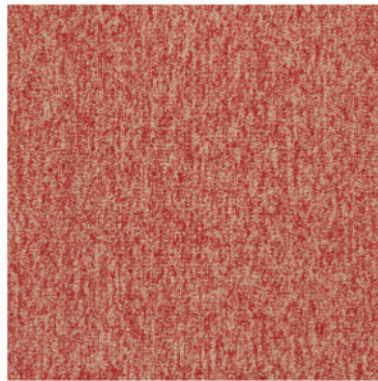
晨夕23



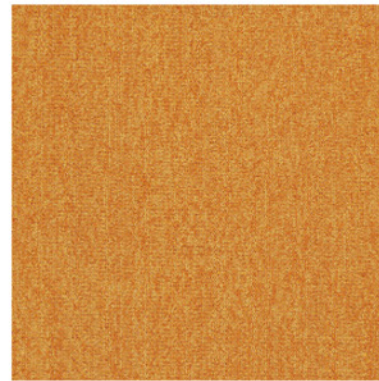
晨夕24



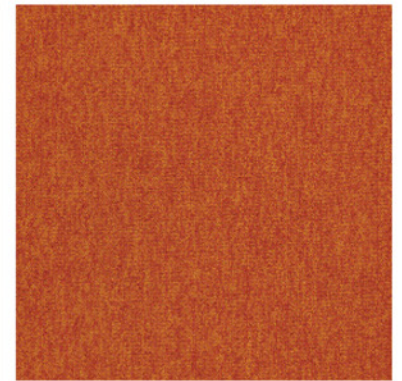
晨夕51



晨夕71

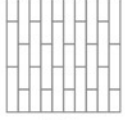


晨夕81

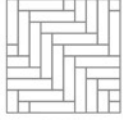


晨夕82

INSTALLATION INSTRUCTIONS:



Ashlar



Herringbone

PRODUCT INFORMATION

Style name/产品名称	晨夕
Construction/结构	level Loop
Fiber/纤维	Nylon 6
Dye method/染色工艺	100% solution dyed
Backing/底背	PVC
Tufting Gauge/针密	5/64
Pile Weight/绒重	450g/m ²
Pile Height/绒高	3.5 mm
Total Thickness/厚度	Approx 6mm
Tile Size/尺寸	500mmx500mm
Nbs Smoke 烟密度	(ASTM E 662)less than 450
Flooring Radiant Panel 临界热辐射通量	Class(Mean average CRF: 0.45 watts/cm ² orhigher) ASTM E-648
Electrostatic Propensity 静电倾向	3.0kV or lower AATCC 134
Colourfastness to Light 耐光色牢度	≥4 after 100 hours AATCC 16E

PRODUCT NOTES:

1. Product specifications are derived from averages resulting from normal manufacturing tolerances in yarn, fiber, temperature, humidity and colour. Product specifications may vary within normal industry and standardised testing tolerances.
2. These specifications reflect mean averages based upon tests of production runs of this carpet style by independent laboratories. A range of variances is implicit in the testing process. Furthermore, the standard test methods established to derive the specifications lack a degree of precision and repeatability; therefore, individual test results on the actual carpet purchased may differ from the specifications above.
3. Colours may vary slightly from dye lot to dye lot.
4. Backing or other materials may be changed without prior notice when shortages occur or when technological advancements become available which provit for improvement of the product's performance.
5. All products are 100% recyclable.



GLP100946